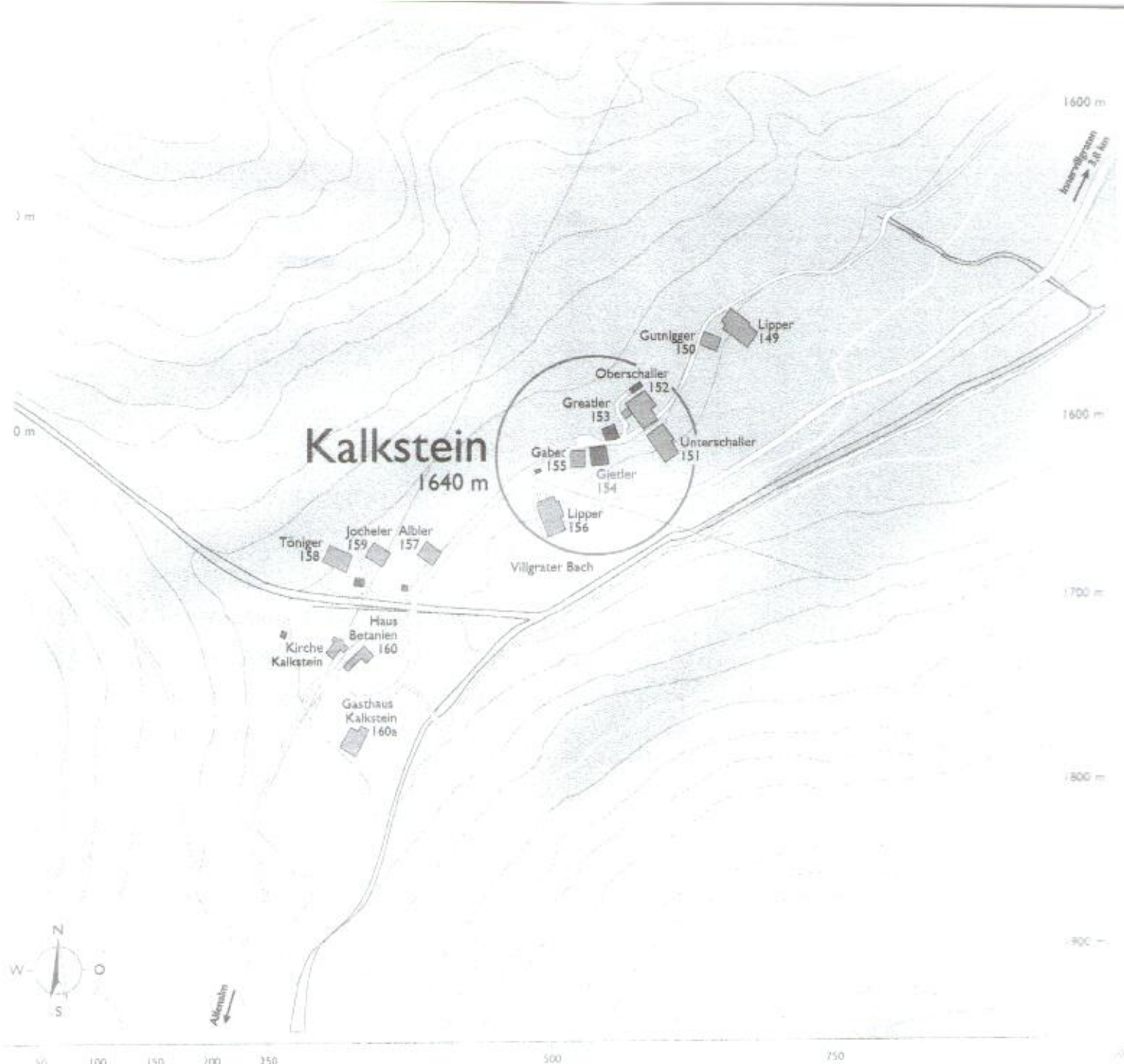
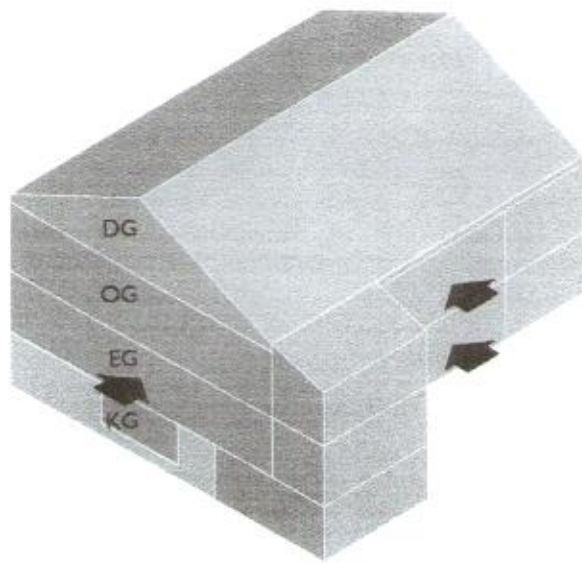





ageplan I : 500

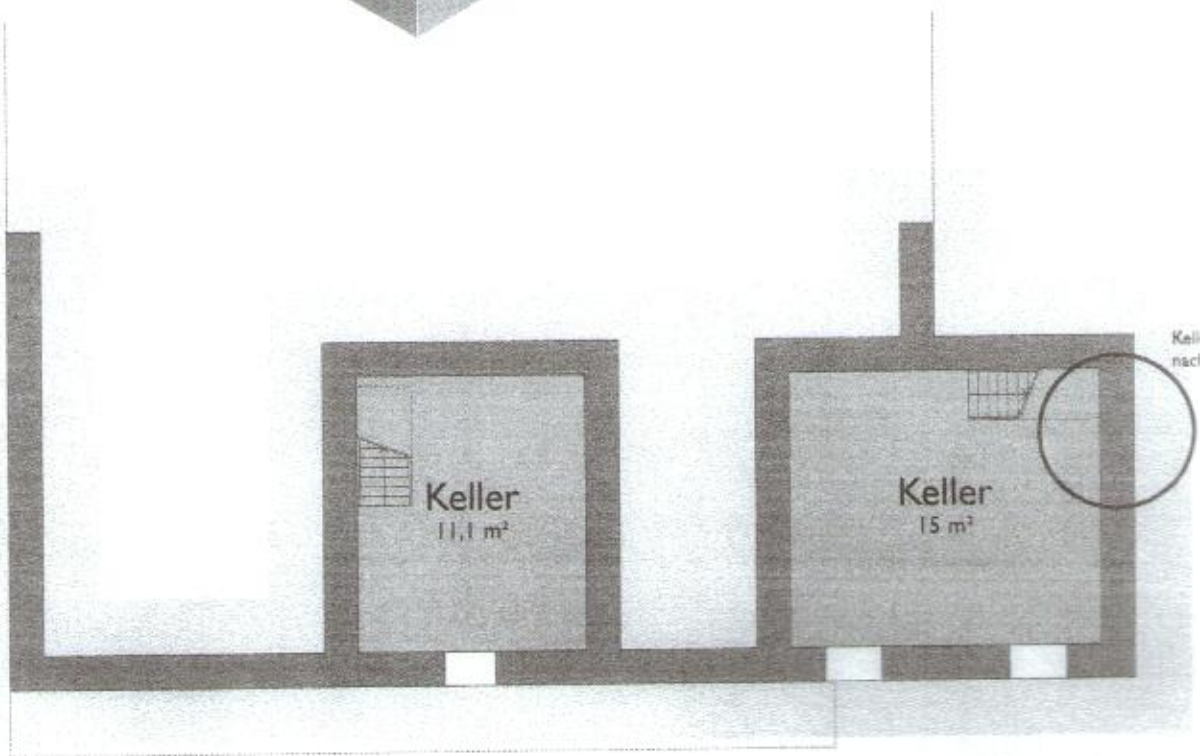


Topographische Plan I : 5000



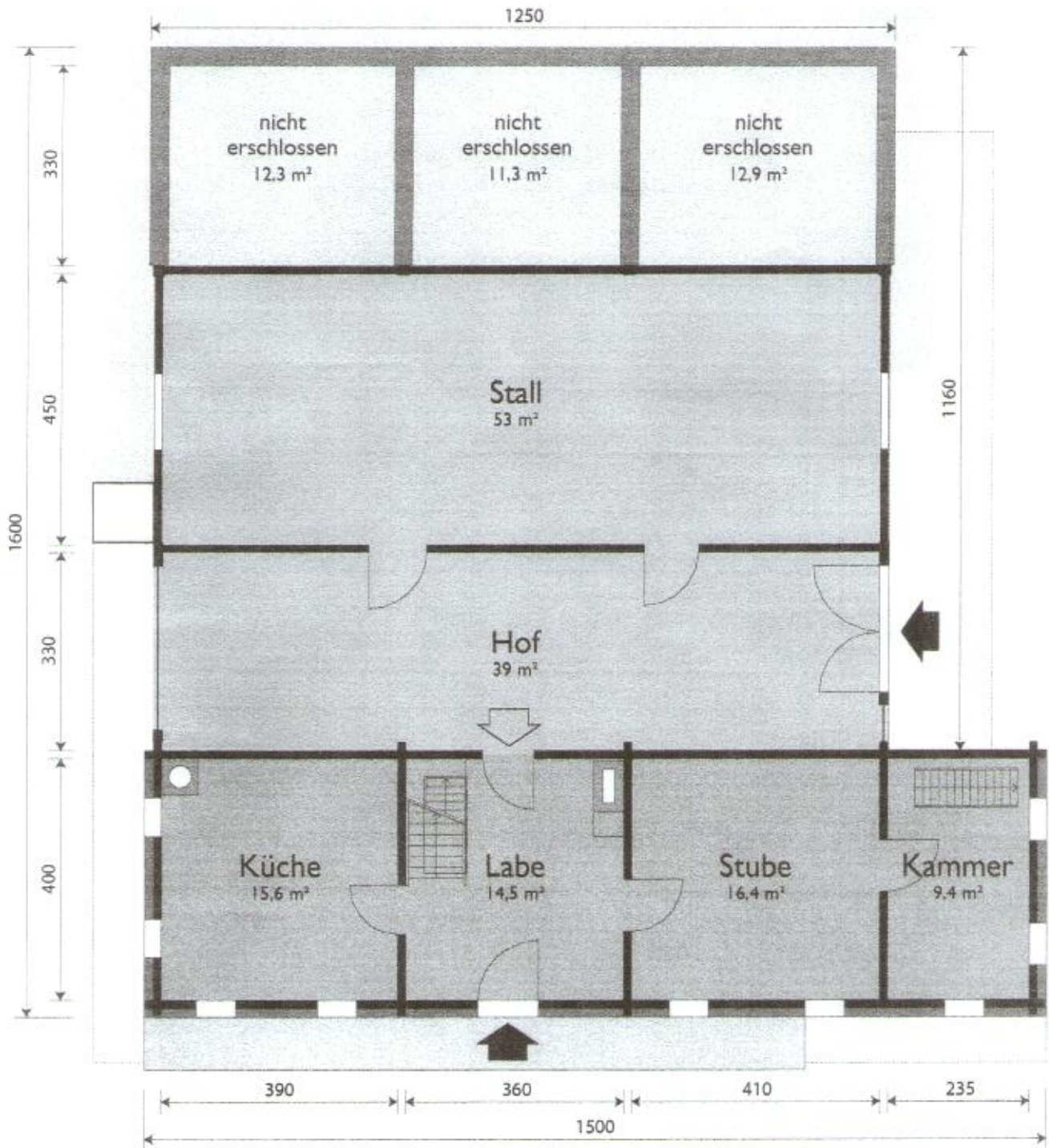
	275,8 m ²
	137,9 m ²
	73,0 m ²
<hr/>	
	486,7 m ²

Bestand



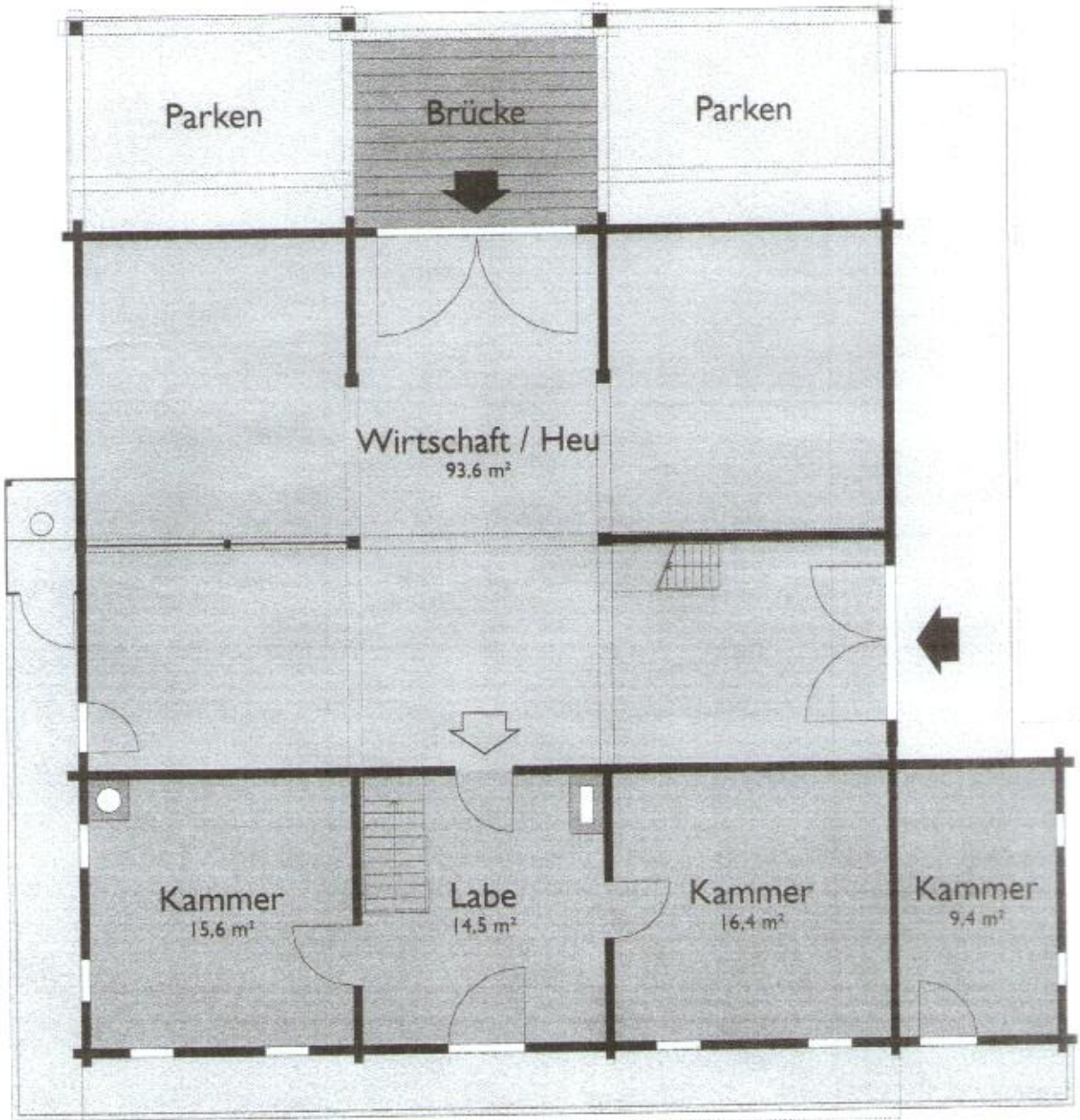
Kellermauer teilweise nach innen eingebrochen

Keller



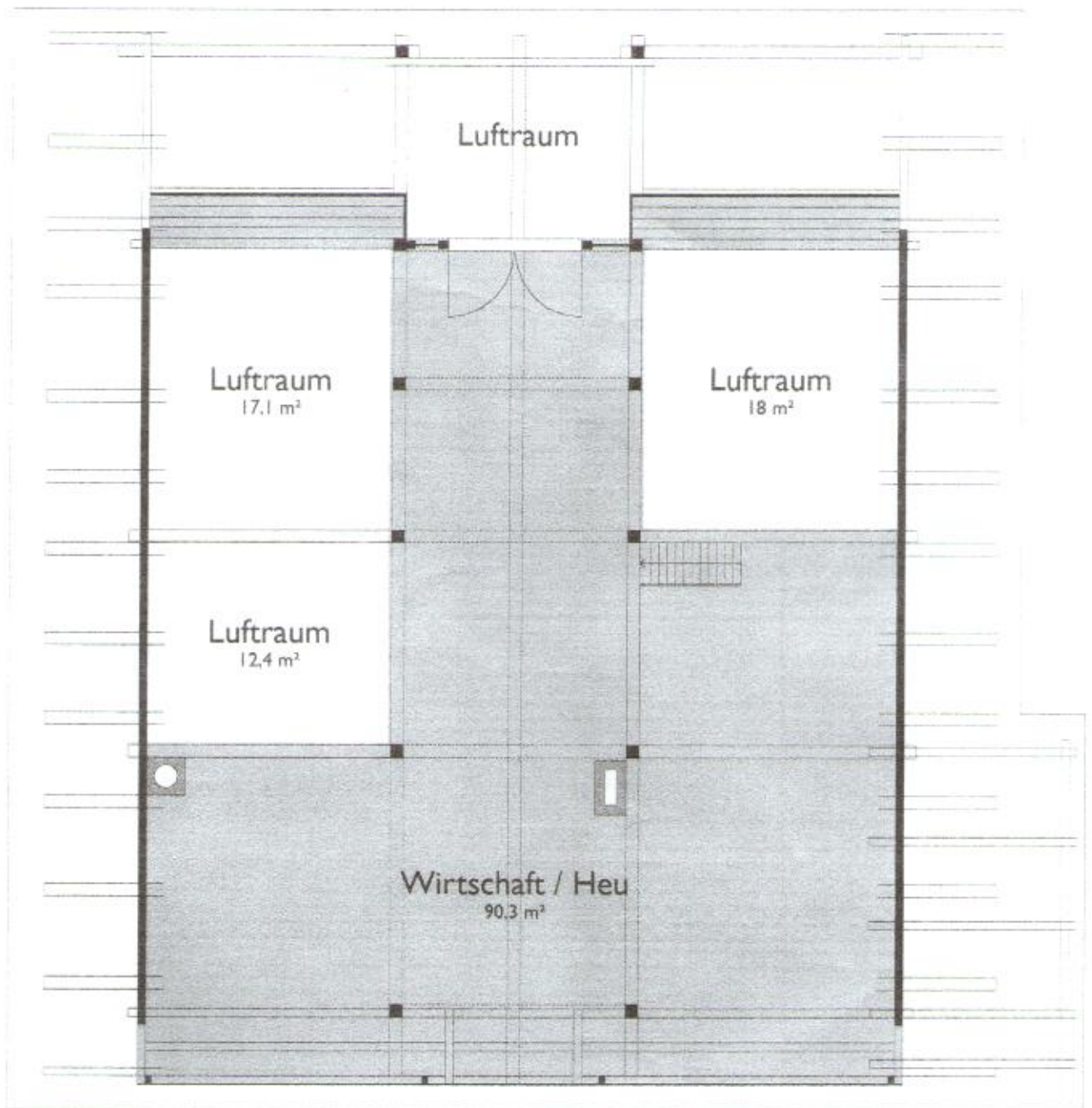
Erdgeschoss

- 92 m²
- 55,9 m²
- 36,5 m²



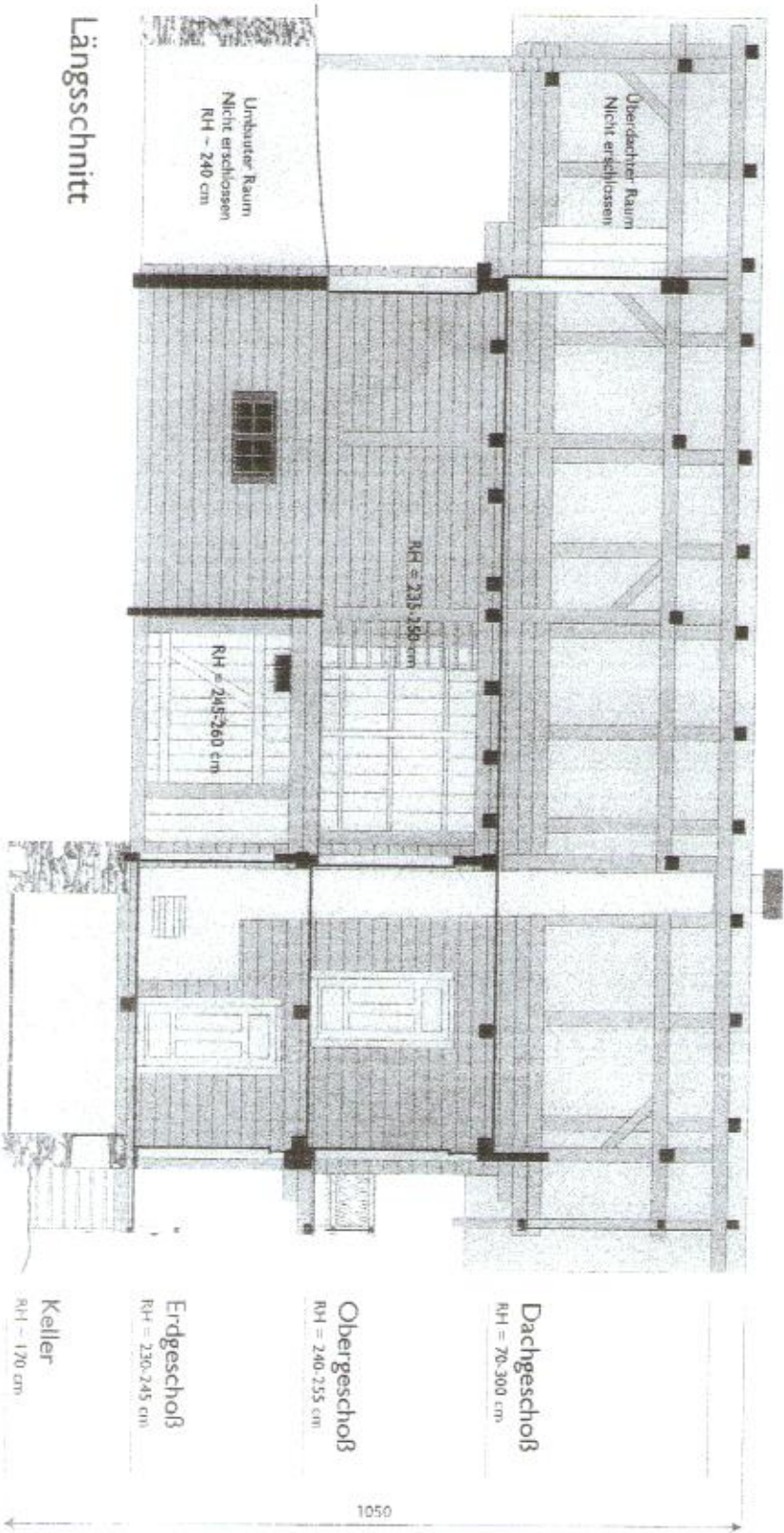
Obergeschoss



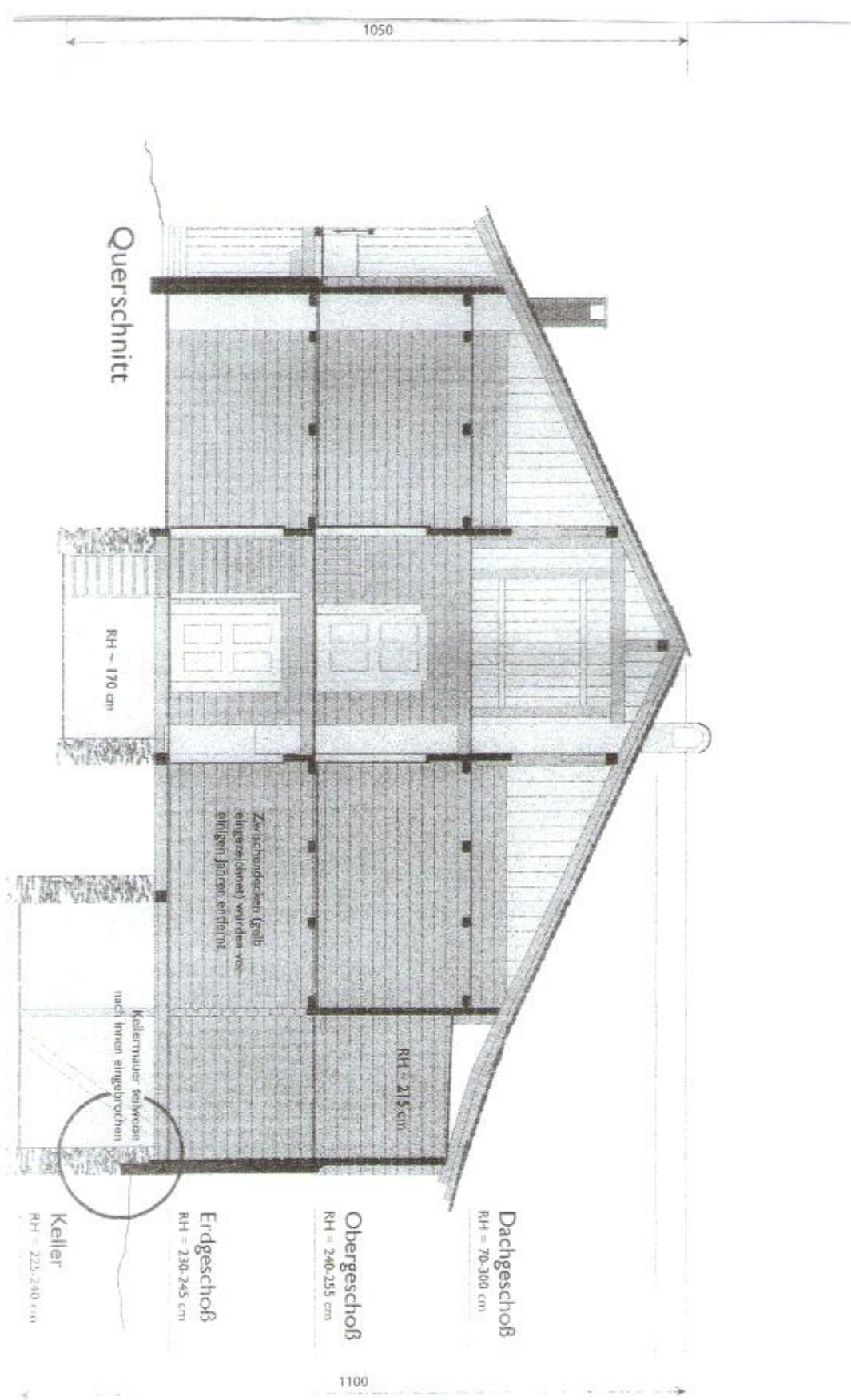


Dachgeschoss

■ 90,3 m²



Längsschnitt



1050

Querschnitt

RH = 170 cm

Zwischendecken (Gelb) eingezwickelt, werden von einigen Jähren ströhen

Kellertreuer teilweise nach innen eingebrochen

RH = 215 cm

Dachgeschoß
RH = 70-300 cm

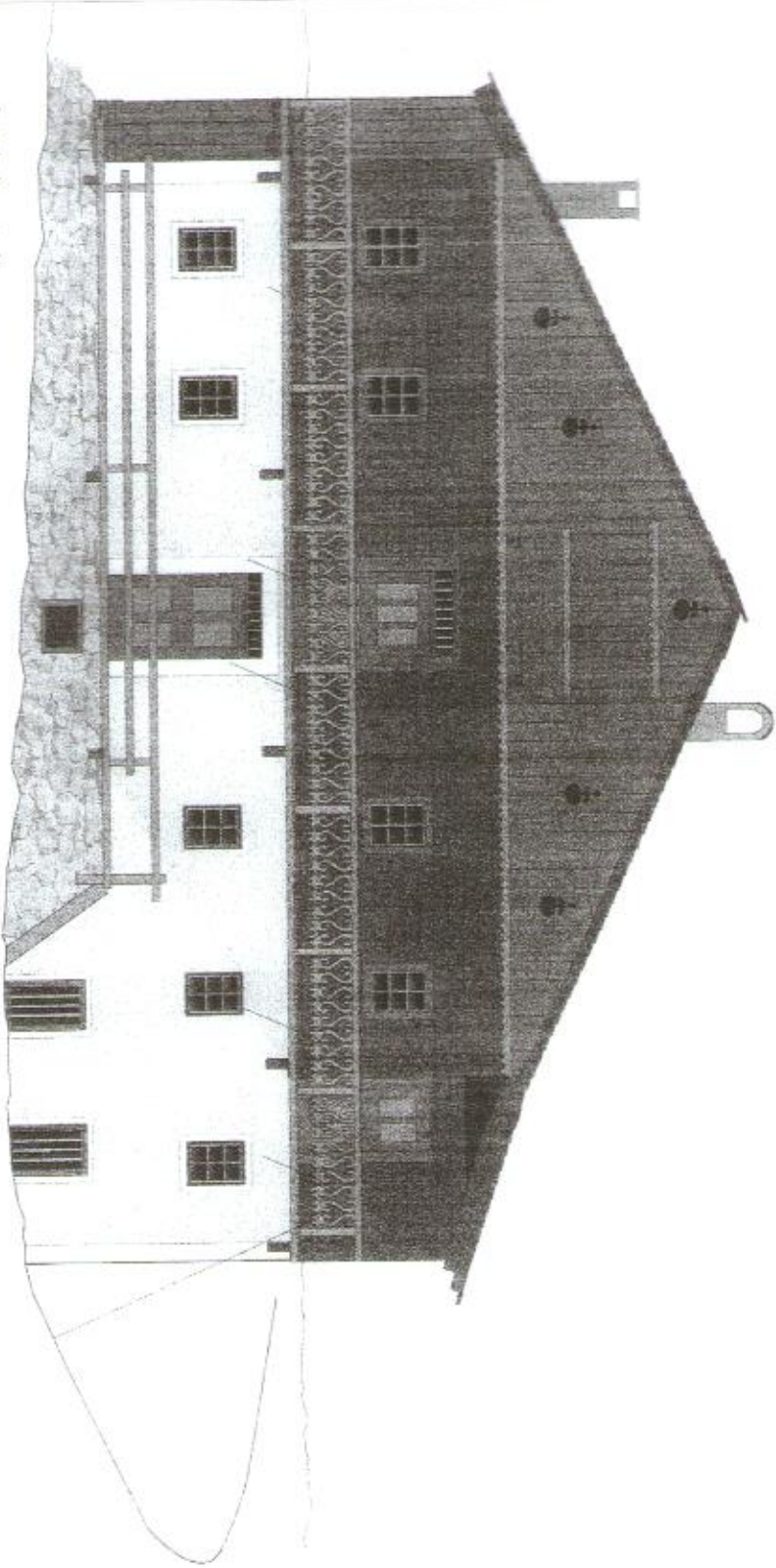
Obergeschoß
RH = 240-255 cm

Erdgeschoß
RH = 236-245 cm

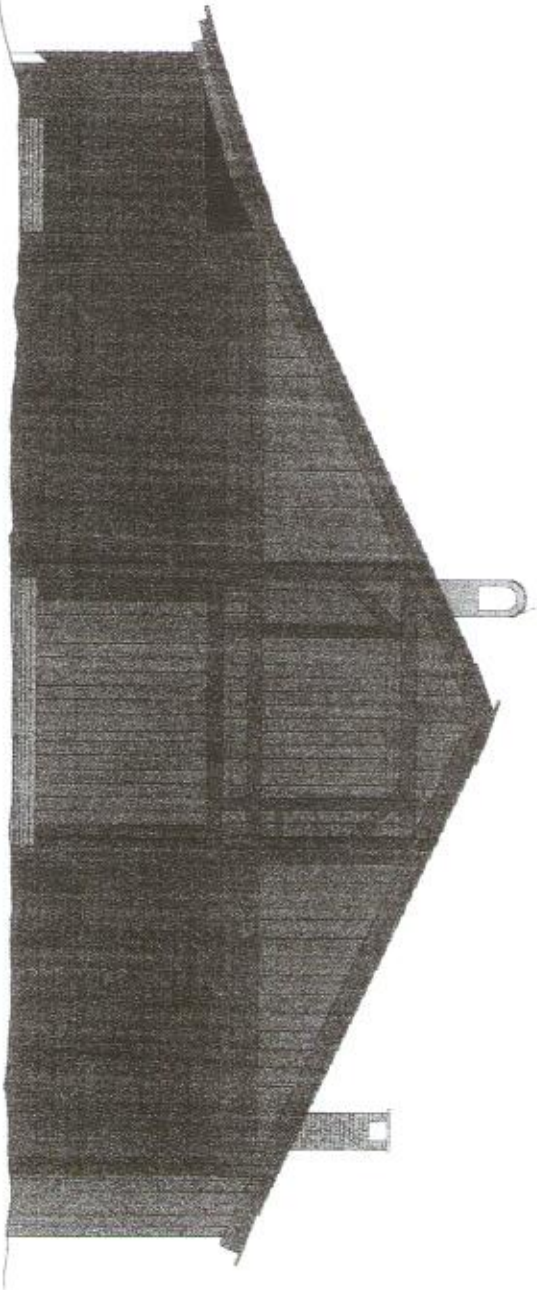
Keller
RH = 225-240 cm

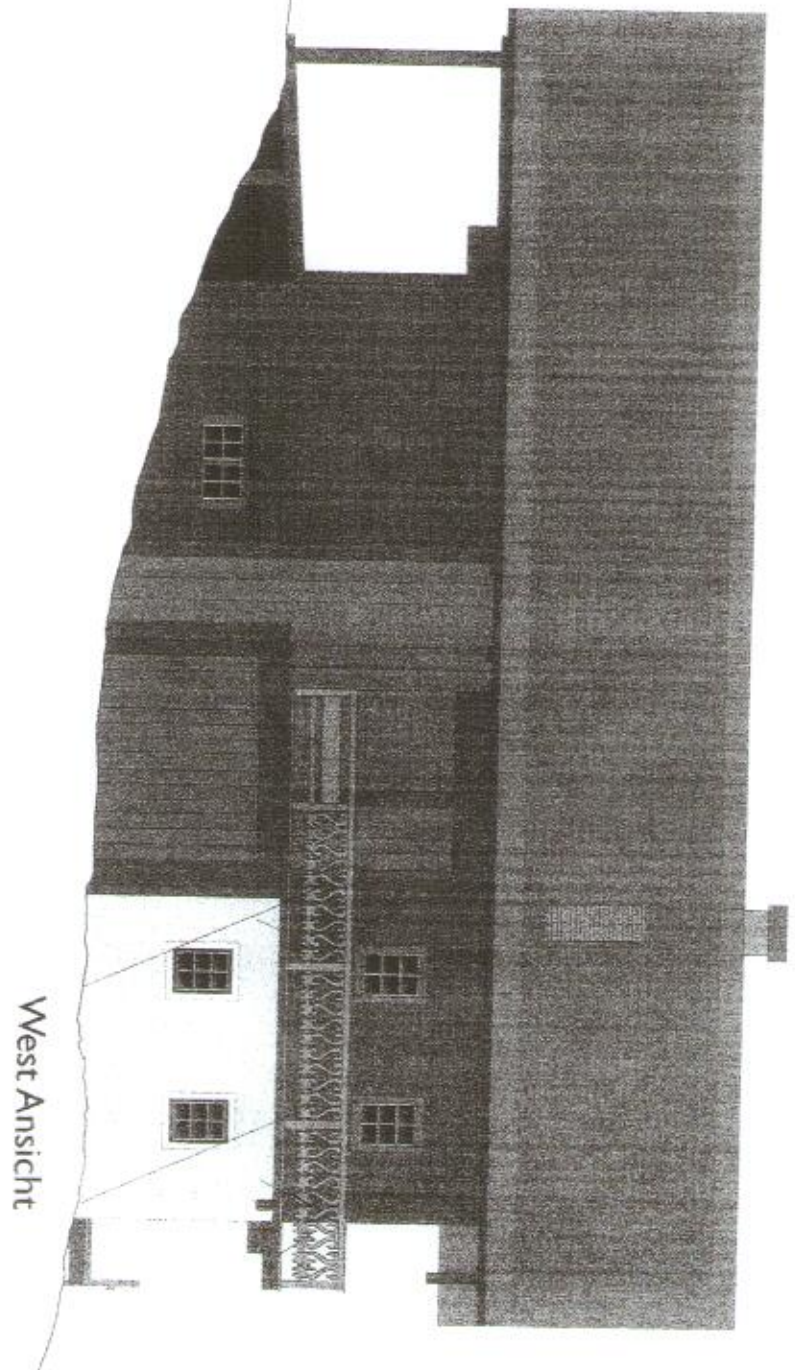
1100

Süd Ansicht



Nord Ansicht





West Ansicht

Ost Ansicht

